



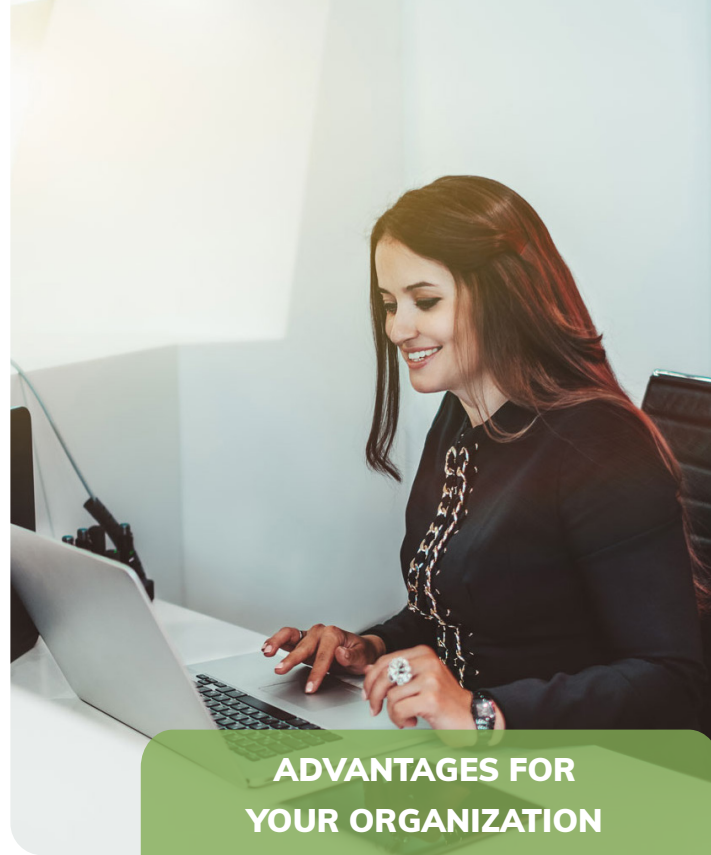
Patient Access **ABILITY Registration Assurance™**

Register each patient with a simplified workflow solution

Registration Assurance saves time and eliminates guesswork by verifying patient identity and address, validating eligibility and benefit information, and performing an insurance discovery query, all in one system.

Providers and patients alike will appreciate the streamlined workflow that verifies patient registrations in real time.

Discover the workflow difference when you automate critical patient registration processes. Finish the registration process faster, with the confidence that your data is accurate and complete.



ADVANTAGES FOR YOUR ORGANIZATION

Timesaving workflow

Verify most patient registration data in less than two minutes; traffic-light alerts allow front-end staff to identify and correct issues quickly and easily.

More billable coverage

Reduce uncompensated care with an average insurance identification match rate of 39.5%¹ on uninsured accounts.

Fewer denials

Validate patient data upfront with access to over 900 payers to mitigate reimbursement risks and reduce claims denials later.

One system

Increase efficiency with one system, one login, one dashboard providing visual alerts to make timely updates and corrections to patient information.

¹ ABILITY internal reporting, September 2021. Individual results may vary.

The myABILITY Portal

Connect to all your Inovalon provider services via myABILITY, a SaaS delivery portal that gives you on-demand access to everything you need. Whether you need quality analytics, eligibility and claims, revenue cycle management or workforce management services, myABILITY can help your clinical, financial, operational, and administrative areas work more effectively and efficiently.

Application Features



Address and ID verification eliminates duplicate patient records while ensuring accurate patient demographics for clinical care and billing.



Automation of critical registration steps alleviates process confusion.



Timesaving workflow and traffic-light alerts empower front-end staff to focus on ensuring record quality.



A single dashboard helps staff identify patient data issues early to mitigate post-service delays in payment or payer denials.



Discovery of unidentified coverage and reimbursement opportunities not presented during the registration process.



Patient responsibility and the coordination of benefits can more **easily** be determined **earlier** in the process.



Ensure accurate patient data collection upfront and quickly identify coverage gaps from over 900 payers that can lead to claims denials and revenue loss.



Verification is managed through a single system, alleviating the need for multiple logins, screens, and sites.

About Inovalon

Inovalon is a leading provider of cloud-based software solutions empowering data-driven healthcare. The Inovalon ONE® Platform brings together national-scale connectivity, real-time primary source data access, and advanced analytics into a sophisticated cloud-based platform empowering improved outcomes and economics across the healthcare ecosystem. The company's analytics and capabilities are used by more than 20,000 customers and are informed by the primary source data of more than 69.5 billion medical events across one million physicians, 611,000 clinical settings, and 350 million unique patients. For more information, visit www.inovalon.com.